



# GMT MONTHLY MEMBERSHIP PROGRESS REPORT

Results as of: 6/30/2019

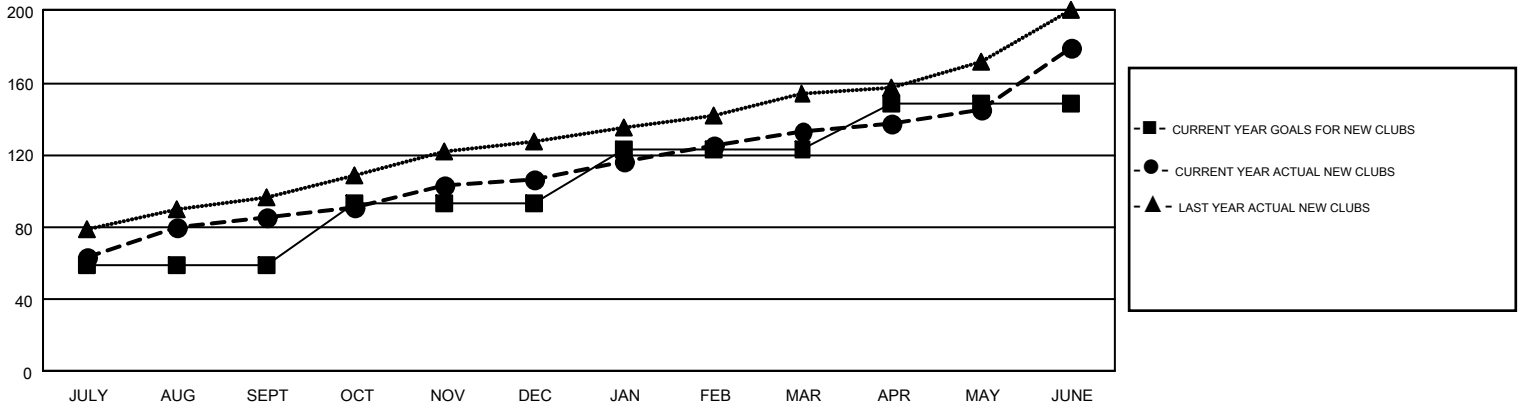
## GMT Constitutional Area 6, Group F

GMT: N S SANKAR

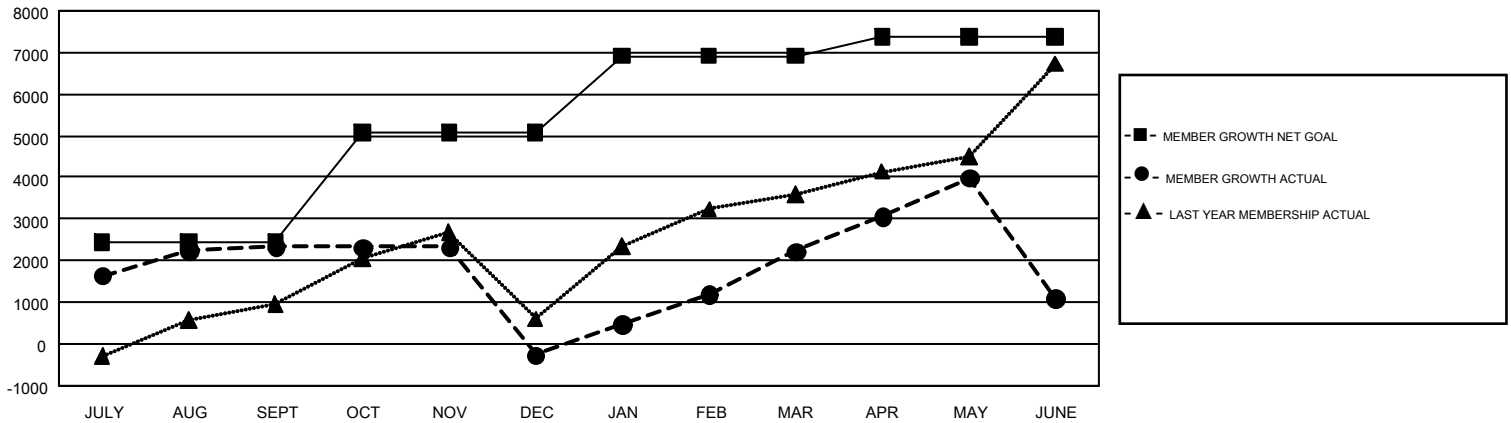
REPORT DOES NOT INCLUDE CLUBS IN UNDISTRICTED AREAS.

Clubs				Members			
RESULTS FOR 2018-2019				RESULTS FOR 2018-2019			
QUARTER	NEW CLUB GOAL	NEW CLUBS	DROPPED CLUBS	QUARTER	MEMBER GROWTH NET GOAL	MEMBER GROWTH ACTUAL	DROPPED MEMBERS ACTUAL (including transfers)
JULY/AUG/SEPT	59	86	10	JULY/AUG/SEPT	2,448	5,064	2,279
OCT/NOV/DEC	34	21	66	OCT/NOV/DEC	2,630	1,863	4,353
JAN/FEB/MAR	30	26	8	JAN/FEB/MAR	1,832	4,209	1,125
APR/MAY/JUNE	25	46	45	APR/MAY/JUNE	477	7,433	8,111

GOALS AND ACTUAL NEW CLUBS CUMULATIVE



GOALS AND ACTUAL MEMBERS CUMULATIVE



DROPPED CLUBS: 129	1,615 CLUBS OF 2,280 ADDED 1 OR MORE NEW MEMBERS	<b>GENDER DISTRIBUTION</b> MALE                    71,189 (78.44%) FEMALE                 19,562 (21.56%)
<b>DROPPED MEMBERS</b> DECEASED                    306 CLUB CANCELLED            2,802 OTHER                         12,759 <hr/> TOTAL                         15,867	<a href="#">CLICK HERE FOR CUMULATIVE MEMBERSHIP DATA</a>	TOTAL FAMILY UNIT MEMBERS                    34,266  FAMILY MEMBERS PAYING HALF DUES                    20,513